



## **DISINFECTION**

cleaning and disinfection stations

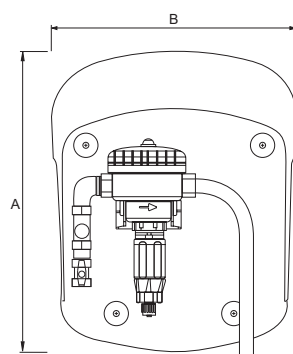


## CENTERDOS D07 AC/DT



Precise and compact spray system with hydraulic dosing pumps, which makes it possible to adjust the product dosing exactly, thereby optimizing product consumption. There are models available for mildly acid and alkaline products.

Model	Code	Materials	Dosing pumps	Hose (m)	Spray lance (m)
CENTERDOS AC	87014000	AC	D07/5VF	-	-
	87014001	AC	D07/5VFP	-	-
	87014107	AC	D07/5VFP	12	0.70
	87014112	AC	D07/5VFP	12	1.20
	87014207	AC	D07/5VFP	25	0.70
	87014212	AC	D07/5VFP	25	1.20
	87015000	AC	D07/125VF	-	-
	87015001	AC	D07/125VFP	-	-
	87015107	AC	D07/125VFP	12	0.70
	87015112	AC	D07/125VFP	12	1.20
	87015207	AC	D07/125VFP	25	0.70
	87015212	AC	D07/125VFP	25	1.20
CENTERDOS DT	87017000	DT	D07/5AF	-	-
	87017001	DT	D07/5AFP	-	-
	87017107	DT	D07/5AFP	12	0.70
	87017112	DT	D07/5AFP	12	1.20
	87017207	DT	D07/5AFP	25	0.70
	87017212	DT	D07/5AFP	25	1.20
	87018000	DT	D07/125AF	-	-
	87018001	DT	D07/125AFP	-	-
	87018107	DT	D07/125AFP	12	0.70
	87018112	DT	D07/125AFP	12	1.20
	87018207	DT	D07/125AFP	25	0.70
	87018212	DT	D07/125AFP	25	1.20



### DIMENSIONS/MM

Model	A	B
CENTERDOS D07	405	325

### CHARACTERISTICS:

Maximum working pressure: from 0.3 to 6 bar.

Fluid temperature: from 5 to 40 °C.

Maximum suction height: 4 m.

Flow rate: from 5 to 700 l/h.

D07/5 dosing: 0.8 - 5.5% and D07/125: 0.5 - 1.25%.

### GENERAL MATERIAL DATA:

Polypropylene wall support.

Polypropylene dosing body.

Dosing piston: polypropylene, PEEK, stainless steel, PTFE, HT EPDM or FKM.

Dosing part: polypropylene, polyethylene, and Hastelloy.

Suction pipe: PVC.

### MATERIALS:

AC: for mildly acidic products.

DT: for mildly alkaline products.

Simple and compact spray system for surfaces via a venturi with an integrated bypass, allowing flushing and rinsing.

Model	Code	Materials	Hose (m)	Spray lance (m)
<b>CENTERDOS VDSA</b>	87010000	DT	-	-
	87012107	DT	12	0.70
	87012112	DT	12	1.20
	87012207	DT	25	0.70
	87012212	DT	25	1.20

**CHARACTERISTICS:**

Maximum working pressure: from 0.5 to 5 bar.

Fluid temperature: from 5 to 70 °C.

Maximum suction height: 2 m.

Flow rate: 430 l/h.

Dosing from 0.85 to 24.5%.

**GENERAL MATERIAL DATA:**

Polypropylene wall support.

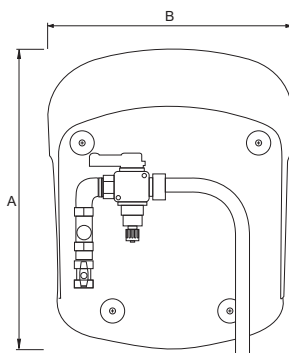
Polypropylene venturi body.

Parts of the venturi in polypropylene, stainless steel, and FKM.

Suction pipe: PVC.

**MATERIALS:**

DT: for mildly alkaline products.


**DIMENSIONS/MM**

Model	A	B
<b>CENTERDOS VDSA</b>	405	325

**CENTERDOS VDSA DT**


Simple and compact device allowing for correct spraying of the product on surfaces via a venturi. There are models available for mildly acid and alkaline products.

Model	Code	Materials	Hose (m)	Spray lance (m)
<b>CENTERLAV</b>	87020000	AC	-	-
	87020107	AC	12	0.70
	87020112	AC	12	1.20
	87020207	AC	25	0.70
	87020212	AC	25	1.20
	87022000	DT	-	-
	87022107	DT	12	0.70
	87022112	DT	12	1.20
	87022207	DT	25	0.70
	87022212	DT	25	1.20

**CHARACTERISTICS:**

Maximum working pressure: from 1.6 to 6 bar.

Fluid temperature: from 5 to 55 °C.

Maximum suction height: 2 m.

Flow rate: 2 l/min.

Dosing from 0.75 to 22.5%.

**GENERAL MATERIAL DATA:**

ABS wall support and polypropylene (PP) venturi.

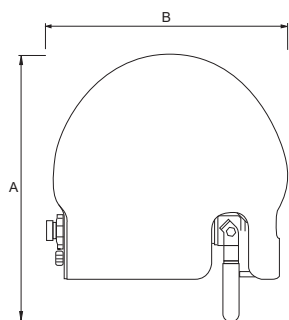
FKM and nitrile seals.

PVC (DT) and PP (AC) spray valve.

**MATERIALS:**

AC: for mildly acidic products.

DT: for mildly alkaline products.


**DIMENSIONS/MM**

Model	A	B
<b>CENTERLAV</b>	285	257

**CENTER LAV AC/DT**


**ACCESSORIES**

**CENTERDOS AC**  
**CENTERDOS DT**  
**CENTERDOS VDSA**  
**CENTERLAV**

**CLEANING AND DISINFECTION**

Code	Description
<b>87091200</b>	Centerdos pressure reducer kit
<b>87100000</b>	316 stainless-steel mobile trolley

**SPRAY LANCES**

Code	Description
<b>87610007</b>	PVC 0.70m AC spray lance KY6510
<b>87610012</b>	PVC 1.20m AC spray lance KY6510
<b>87610107</b>	PVC 0.70m AC spray lance KY6515
<b>87610112</b>	PVC 1.20m AC spray lance KY6515
<b>87610207</b>	PVC 0.70m AC spray lance KY6520
<b>87610212</b>	PVC 1.20m AC spray lance KY6520
<b>87610307</b>	PVC 0.70m AC spray lance KY6530
<b>87610312</b>	PVC 1.20m AC spray lance KY6530
<b>87612007</b>	Stainless-steel 0.70m DT spray lance 6510
<b>87612012</b>	Stainless-steel 1.20m DT spray lance 6510
<b>87612107</b>	Stainless-steel 0.70m DT spray lance 6515
<b>87612112</b>	Stainless-steel 1.20m DT spray lance 6515
<b>87612207</b>	Stainless-steel 0.70m DT spray lance 6520
<b>87612212</b>	Stainless-steel 1.20m DT spray lance 6520
<b>87612307</b>	Stainless-steel 0.70m DT spray lance 6530
<b>87612312</b>	Stainless-steel 1.20m DT spray lance 6530
<b>87611001</b>	0.70m AC spray lance for refill
<b>87611002</b>	0.70m DT spray lance for refill

**HOSES WITH FITTINGS**

Code	Description
<b>87090000</b>	Supply hose FF 3/4"-1/2" 1 m
<b>87090106</b>	AC hose with PVC fittings FF 3/4"-1/2" 2.5 m
<b>87090107</b>	AC hose with PVC fittings FF 3/4"-1/2" 5 m
<b>87090100</b>	AC hose with PVC fittings FF 3/8"-1/2" 12 m
<b>87090101</b>	AC hose with PVC fittings FF 3/8"-1/2" 25 m
<b>87090102</b>	AC hose with PVC fittings FF 1/2"-1/2" 12 m
<b>87090103</b>	AC hose with PVC fittings FF 1/2"-1/2" 25 m
<b>87090104</b>	AC hose with PVC fittings FF 3/4"-1/2" 12 m
<b>87090105</b>	AC hose with PVC fittings FF 3/4"-1/2" 25 m
<b>87090206</b>	DT hose with brass fittings FF 3/4"-1/2" 2.5 m
<b>87090207</b>	DT hose with brass fittings FF 3/4"-1/2" 5 m
<b>87090200</b>	DT hose with brass fittings FF 3/8"-1/2" 12 m
<b>87090201</b>	DT hose with brass fittings FF 3/8"-1/2" 25 m
<b>87090202</b>	DT hose with brass fittings FF 1/2"-1/2" 12 m
<b>87090203</b>	DT hose with brass fittings FF 1/2"-1/2" 25 m
<b>87090204</b>	DT hose with brass fittings FF 3/4"-1/2" 12 m
<b>87090205</b>	DT hose with brass fittings FF 3/4"-1/2" 25 m

Compact fogging equipment, practical and easy to handle, to release a micronized mist of the product in the environment through air pressure.

Model	Code	Product flow rate <sup>1</sup> (cc/min.)	Air consumption (l/m)	Approx. work area (m²)
NEBU E-20/1	87200001	100	150	400
NEBU E-20/2	87200011	200	300	700
NEBU E-20/3	87200021	300	450	1000

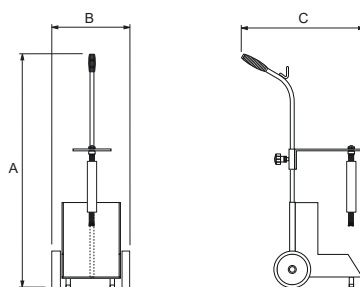
Code <sup>1</sup>: The flow rates are approximate and they are calculated at an air pressure of 6 bar.

#### CHARACTERISTICS:

Working air pressure: from 4 to 8 bar.  
Maximum suction height: 40 cm.  
Necessary air flow rate: from 100 l/min. for a dosing from 0.85 to 24.5%.

#### GENERAL MATERIAL DATA:

Trolley material: 316L stainless steel.  
Spray nozzle: 316L stainless steel / FKM.  
Suction pipe: Flexible PVC braided hose.  
Wheels: nylon/rubber (optional).  
Air connection and universal M quick adapter.  
Product container: 20-liter bottle (ideal).



#### DIMENSIONS/MM

Model	A	B	C
NEBU E	960	400	500

## FOGGER



Code	Materials
87200200	TIMER digital controller
87200901	Air fogger hose with 12-m fittings
87200902	Air fogger hose with 25-m fittings

## ACCESSORIES

