



sensus

0.438 m³

ACCESSORIES AND EXTRAS

meters

x0,0001

Robust and precise magnetic transmission meters with direct reading including liter count. Reliable, easy-to-fit independent pulse emitter with flow direction. Possibility for pulse and data transmitter.

Model	Code	Fitting connections (in inches)	Range Q3 / Q1	Flow rates <sup>1</sup> (l/h)		
				Qa	Min. q	Q <sub>3</sub>
<b>120-C 15.115</b>	11302015	1/2	80	7	30	2500
<b>120-C 20.115</b>	11302020	3/4	80	10	50	4000
<b>420PC 25.260</b>	11306025	1	80	20	50	6300
<b>420PC 30.260</b>	11306030	1¼	80	20	90	10,000
<b>420PC 40.300</b>	11306040	1½	80	40	150	16,000

Fittings not included.

#### CHARACTERISTICS:

Maximum working pressure: 10 bar. (120-C), 16 bar (420PC).  
Temperature: from 1 to 35 °C.

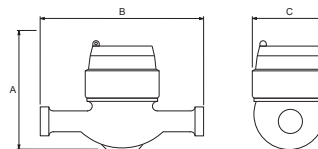
#### GENERAL MATERIAL DATA:

Brass body.  
Plastic turbine, gears and shaft.  
Sapphire bearings.  
Adjustable face.  
Single-jet (mod. 120-C).

Multi-jet (mod. 420PC).  
Pulse or data emitter (optional).  
Cold water models; hot water models are available.  
Connector fittings not included.

#### CODE<sup>1</sup>:

Qa = Starter flow rate.  
Q min. = Minimum flow rate (max. error 5%).  
Q<sub>3</sub> = Nominal flow rate.



#### DIMENSIONS/MM

Model	A	B	C
<b>120-C 15.115</b>	100	115	70
<b>120-C 20.115</b>	100	115	70
<b>420PC 25.260</b>	142	260	102
<b>420PC 30.260</b>	142	260	102
<b>420PC 40.300</b>	160	300	136

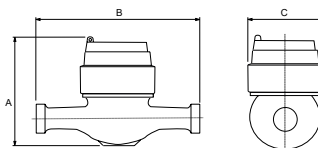
## WATER METER CLASS B



Rotary piston volumetric meters that operate with very low flow rates and offer much greater reliability and precision compared to conventional meters. Direct reading including liter count and the possibility to easily incorporate a pulse emitter with flow direction or a data transmitter.

Model	Code	Fitting connections (in inches)	Range Q3 / Q1	Flow rates <sup>1</sup> (l/h)		
				Qa	Min. q	Q <sub>3</sub>
<b>620-C 15.115</b>	11311015	1/2	315	1	3	2500
<b>620-C 20.190</b>	11311020	3/4	315	2	6	4000
<b>620 25.260</b>	11310025	1	315	7	11	6300
<b>620 30.260</b>	11310030	1¼	315	7	11	10,000
<b>620 40.300</b>	11310040	1½	315	15	25	16,000

Fittings not included.



#### DIMENSIONS/MM

Model	A	B	C
<b>620-C 15.110</b>	140	115	104
<b>620-C 20.190</b>	150	190	114
<b>620 25.260</b>	186	260	135
<b>620 30.260</b>	186	260	135
<b>620 40.300</b>	193	300	150

#### CHARACTERISTICS:

Maximum working pressure: 16 bar.  
Temperature: from 1 to 35 °C.

#### GENERAL MATERIAL DATA:

Body made from composite (mod. 620-C) and brass (mod. 620).  
Plastic turbine, gears and shaft.  
Sapphire bearings.  
Adjustable face.

Pulse or data emitter (optional).  
Cold water models; hot water models are available.  
Connector fittings not included.

#### CODE<sup>1</sup>:

Qa = Starter flow rate.  
Q min. = Minimum flow rate (max. error 5%).  
Q<sub>3</sub> = Nominal flow rate.

## WATER METER CLASS D



## WATER METER CLASS B TURBINE



Turbine meters with hydrodynamically balanced rotor and symmetrical calibration adjustment. They have a broad measurement range with good resolution throughout the working range. Possibility to easily insert a pulse emitter.

Model	Code	Flange connections (in inches)	Range Q <sub>3</sub> / Q <sub>1</sub>	Flow rates <sup>1</sup> (m <sup>3</sup> /h)		
				Q <sub>a</sub>	Min. q	Q <sub>3</sub>
WP 50.200	11320050	2	100	0.05	0.28	25
WP 65.200	11320065	2½	100	0.07	0.4	40
WP 80.200	11320080	3	100	0.10	0.5	63
WP 100.250	11320100	4	100	0.11	0.5	100
WP 125.250	11320125	5	100	0.15	1	160
WP 150.300	11320150	6	100	0.3	1.6	250

Flanges not included.

### CHARACTERISTICS:

Maximum working pressure: 16 bar.  
Temperature: from 1 to 50 °C.

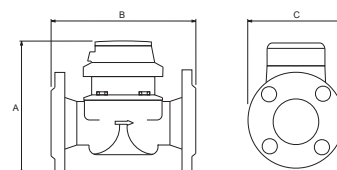
### GENERAL

#### MATERIAL DATA:

Body: cast iron.  
Insertion set and propeller: polymers.  
Adjustable face.  
Pulse or data emitter (optional).  
Seals included.  
Flanges and fasteners not included.

### CODE '1:

Q<sub>a</sub> = Starter flow rate.  
Q min. = Minimum flow rate (max. error 5%).  
Q<sub>3</sub> = Nominal flow rate.



### DIMENSIONS/MM

Model	A	B	C
WP 50.200	193	200	146
WP 65.200	205	200	170
WP 80.200	245	225	190
WP 100.250	255	250	210
WP 125.250	278	250	236
WP 150.300	312	300	270

## PULSE EMITTER ACCESSORIES



Pulse emitters that permit transmission of readings from our meter to external equipment.

Model	Code	Compatible meters
Emisor HRI	11390002	420PC/620/120-C
Emisor HRI-WP	11390004	WP
Emisor WP OD07	11390005	WP
OPT-4b	11390902	All

### CHARACTERISTICS:

**Emisor HRI:** Standard emitter of 1 pulse for every 1 liter with programming options for different values (1 pulse x 2.5/5/10/25/50/100/250/500/1000 liters).

**Emisor HRI-WP:** Standard emitter of 1 pulse for every 100 liters, with programming option for different values (1 pulse x 10/100/500/1000 liters).

**Emisor WP OD07:** Special optical emitter of 1 pulse for every 1 liter up to WP125, then 1 pulse every 10 liters. It requires a 24 Vdc supply or a pulse discriminator (mod. OPTIC).

**OPT-4b:** 230-Vac opto-isolator capable of generating 4 independent outputs on receiving a pulse from the emitter.

MUST BE USED FOR THE CONNECTION OF MORE THAN ONE DEVICE TO A PULSE EMITTER.

Residual magnetism volumetric meter offering unrivaled measurement accuracy with an R800 ratio across the entire range. Smart meter, no matter the installation direction or position. It is also a robust and reliable device because it has no moving parts in its interior which could break down or wear out, for example. Equipped with the latest technology for communication on AMI networks, among others, via an 868-MHz or 433-MHz energy-efficient radio, with a battery with a useful life of over 15 years.

Model	Code	Fitting connections (in inches)	Range Q3 / Q1	Flow rates <sup>1</sup> l/h		
				Qa	Min. q	Q <sub>3</sub>
iPERL 15.115	11315015	1/2	800	1.6	3.13	2500
iPERL 20.115	11315020	3/4	800	2.5	5	4000
iPERL 25.260	11315025	1	800	4	7.88	6300
iPERL 30.260	11315030	1¼	800	6.4	12.5	10,000
iPERL 40.300	11315040	1½	800	10	20	16,000

Fittings not included.

#### CHARACTERISTICS:

Maximum working pressure: 16 bar.  
Minimum water conductivity: 120 µS/cm.  
Temperature: from 1 to 50 °C.

#### GENERAL INFORMATION:

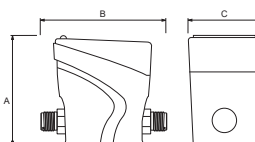
Digital totalizer.  
No moving parts.  
Alarm functions.  
Data recording with 2880 parameters.  
Bi-directional communication for automatic meter reading (AMR) solutions and advanced metering infrastructure (AMI).  
Useful life of over 15 years, depending on the communication use.  
WHO certified.

#### GENERAL MATERIAL DATA:

Body made from composite.  
Fully sealed tamperproof meter.  
Cold water models; hot water models are not available.  
Connection fittings not included.

#### CODE<sup>1</sup>:

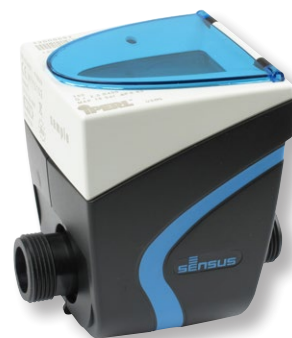
Qa = Starter flow rate.  
Q min. = Minimum flow rate (max. error 5%).  
Q<sub>3</sub> = Nominal flow rate.



#### DIMENSIONS/MM

Model	A	B	C
iPERL 15.115	120	115	94
iPERL 20.115	120	115	94
iPERL 25.260	138	260	114
iPERL 30.260	138	260	114
iPERL 40.300	138	300	114

## WATER METER CLASS D ADVANCED



Model	Code	Description
TSL	11330000	TSL liter preselector
TSL-R	11330100	TSL liter preselector with weekly clock

Kit not included.

Model	Code	Description
TSL-DN15	11330215	Complete kit for preselector TSL DN15 (1/2")
TSL-DN20	11330220	Complete kit for preselector TSL DN20 (3/4")
TSL-DN25	11330225	Complete kit for preselector TSL DN25 (1")
TSL-DN30	11330230	Complete kit for preselector TSL DN30 (1¼")
TSL-DN40	11330240	Complete kit for preselector TSL DN40 (1½")

Accessories for TSL and TSL-R preselector.

#### CHARACTERISTICS:

**TSL preselector:** 230 Vac electronic controller with start/stop control button and remote-control option. Pulse input (1 pulse x 1 liter) and output to manage automation, or electrovalve. Possibility for large dosages and totalizer function and partial count.

**TSL-R preselector:** The same functions as the TSL but with a weekly clock for programmable functions with a maximum of 2 operations per day.

**Full kit:** This kit includes a pulse emitter (1 pulse x 1 liter), a high-quality 230-Vac brass electrovalve, which is normally closed, and a Class B water meter, depending on the kit model.

## PRESELECTOR



## FITTINGS & FLANGES



Set of fittings and flanges necessary for connection to water meters.

Model	Code	Fitting connections (in inches)	Compatible meters
Racor 15	11390215	1/2	120-C 15.115
			620-C 15.115
			iPERL 15.115
Racor 20	11390220	3/4	120-C 20.115
			620-C 20.190
			iPERL 20.115
Racor 25	11390225	1	420PC 25.260
			620 25.260
			iPERL 25.260
Racor 30	11390230	1¼	420PC 30.260
			620 30.260
			iPERL 30.260
Racor 40	11390240	1½	420PC 40.300
			620 40.300
			iPERL 40.300
Brida 50	11390300	2	WP 50.200
Brida 65	11390301	2½	WP 65.200
Brida 80	11390302	3	WP 80.200
Brida 100	11390303	4	WP 100.250
Brida 125	11390304	5	WP 125.250
Brida 150	11390305	6	WP 150.300
Tornillos WP 50/60	11390350	Set of stainless-steel fasteners for WP50/65 meter	
Tornillos WP 80	11390351	Set of stainless-steel fasteners for WP80 meter	