



"Our company and our entire team  
are on hand to help"

DOSING  
SYSTEMS

CHEMICAL  
PRODUCT

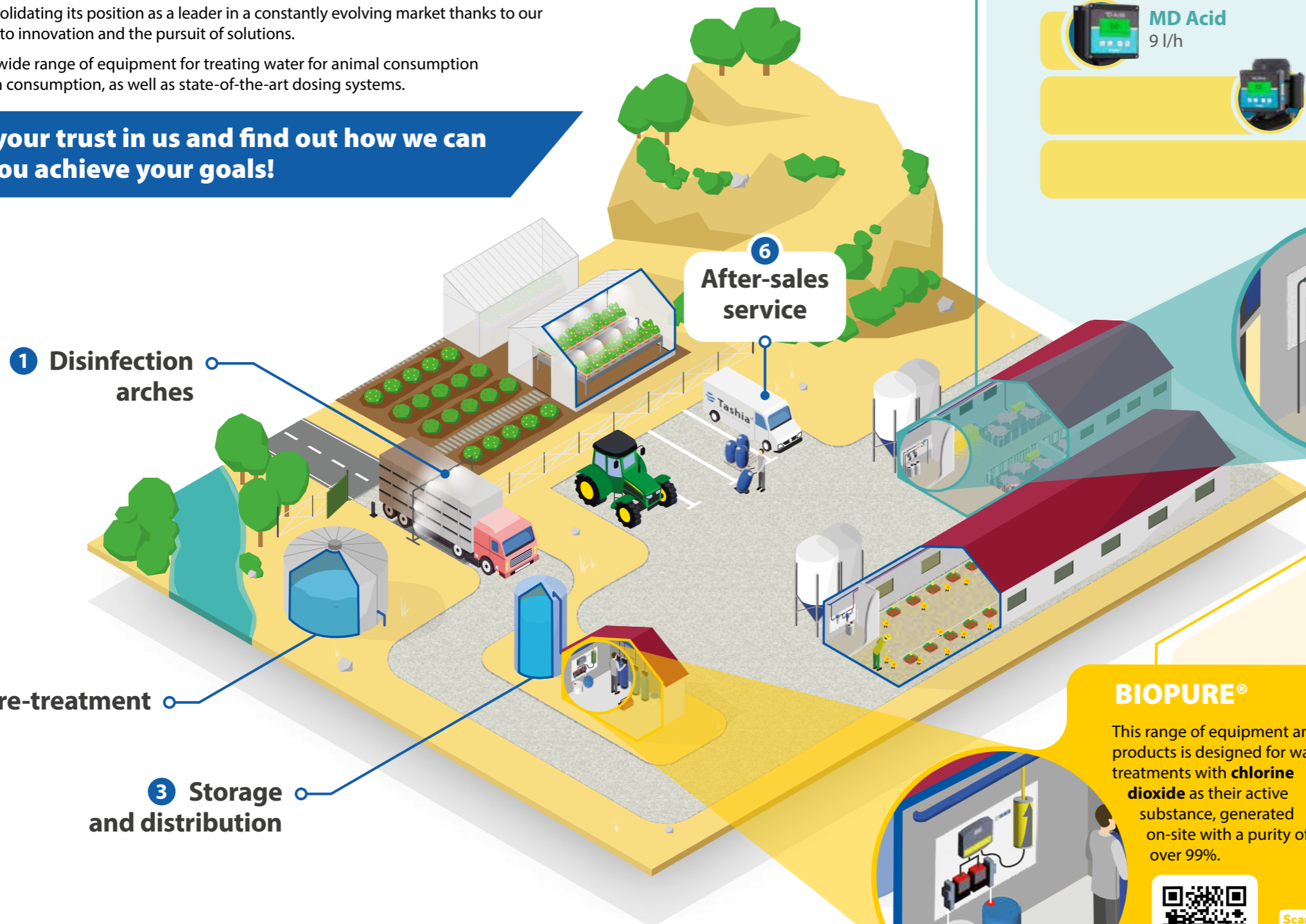
WATER  
TREATMENT

## What do we do?

Since 1986, Tashia SL has been committed to the needs of our customers and their farms, consolidating its position as a leader in a constantly evolving market thanks to our dedication to innovation and the pursuit of solutions.

We offer a wide range of equipment for treating water for animal consumption and human consumption, as well as state-of-the-art dosing systems.

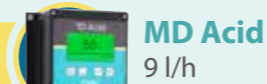
**Place your trust in us and find out how we can help you achieve your goals!**



### 5 Medication

Water is an essential nutrient for all living things and is the ideal means for treating, preventing or curing any illness or health problem that your farm animals may have.

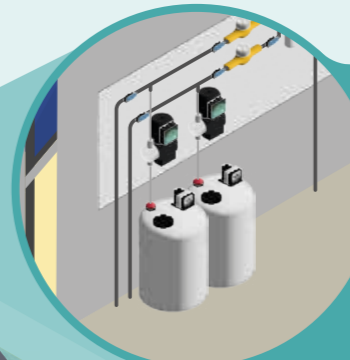
Our range of high-precision proportional electrical dosing pumps is produced using highly chemical-resistant materials, specifically designed for administering **medications, vaccines, probiotics, acids, supplements, etc.**



#### MD Advanced 120 l/h

**Linear** volumetric proportional dosing system, which guarantees the best homogenization at all times.

It achieves this thanks to its stepper motor, which enables a dosing ratio of **1:2000**. When paired with an **R800** meter, this facilitates dosing at water flow rates of even less than 3 l/h.



#### MIXER

Our mixer has become an **indispensable** complement to ensure perfect **homogenization** and precise dosing of **medications, acids and supplements**.



Scan me!

### 4 Water treatment

End-to-end solution for the proper treatment of water for animal and human consumption. Through a physical or bacteriological process, we are able to purify and improve water quality to fit its different uses.

#### BIOPURE®

This range of equipment and products is designed for water treatments with **chlorine dioxide** as their active substance, generated on-site with a purity of over 99%.



Scan me!

#### On-site ClO2 generation



**DIOXER PRO In-Line**

0,15-1.000 g/h



**DIOXER PRO Batch**

0-32 g/h



**BIOPURE® READY & PLUS**

0-5 g/h

# Water treatment

We have a wide variety of next-generation equipment for the proper treatment of water for animal and human consumption. Through a physical or bacteriological process, we are able to purify and improve water quality to fit its different uses.

## Reverse osmosis

Reverse osmosis is a membrane technology that allows us to desalinate water. It provides high food-grade water quality using a natural process that does not require chemicals to be applied.

Production

180 l/h

8.200\* l/h

\*Ask about larger production.  
We supply the **OSMOSIS RO XL** range.

## Multi-layer filters

This equipment is formed of high-bed filters, both manual and automatic, loaded with zeolites and used for retaining suspended materials.

It works by allowing water to pass through a load with different granulations, to ensure highly-efficient filtration.

The different models available allow us to cover the highest to lowest water consumption, perfectly adapting to every filtration requirement.



## Dechlorinators

We have manual and automatic systems with activated carbon for the removal of free chlorine from water. It also has properties to remove organic pollutants, heavy metals, odors and tastes, etc.

The automatic option allows flushing time to be programmed when preferred, adapting it to working times.

The dechlorination capacity is a guide and it varies depending on the residual chlorine content of the water we supply.



## Water softeners

In the descaling process, we use automatic equipment to remove or reduce water hardness through an ionic exchange process.

This equipment consists of one or several resin columns with a valve, an automatic programmer and a separate tank for brine.

Regeneration control is performed using a microprocessor able to work with different types of regeneration: by volume, by time, mixed or delayed volume. Our equipment is adaptable to all types of flow rates and requirements.

Flow rates

0,8 m<sup>3</sup>/h

24 m<sup>3</sup>/h





Soria, 2019

### Volumetric disinfection

This is high-pressure purifying equipment with a volumetric system (proportional to flow rate).

For easier installation, it offers different assembly types: panel or **PT dosing kit**.

There are different dosing pump models, depending on the required flow rates and the products to be dosed.

This is a simple and economical solution with low maintenance costs.

### Electrochlorination

This is an on-site system for generating activated chlorine using saline electrolysis. Its innovative design increases efficiency, allowing for on-demand chlorine generation.

This preserves all the properties, ensures a linear, stable and continuous dosing, and avoids the need for handling chemicals.

Plus, thanks to its pioneering technology, it can perform the whole process with low salt and energy consumption.

It can be installed very quickly and easily thanks to its modular plug & play design.

### Probe dosing

This purifying system works by means of a multi-parameter controller that continuously measures the reagent and doses according to a pre-set waste value. It is ideal for pre-treated water or water from different origins. Although it is complex to install, its maintenance process is much simpler and quicker, while still being rigorous.

It allows us to continuously view the waste ppm of the product used. More than one parameter can also be regulated.



## BIOPURE®

**Biopure® Plus** is the ideal manual generation range for both occasional use and up to 20 m<sup>3</sup> of use per day.

Preparing the product is very easy and safe, as precursors are added to a volume of water using the **Starter Kit** preparation solutions, which are essential for guaranteeing uniform treatment.

**Biopure® Pro** is our automatic generation product range, with production of up to 1,000 g/h.

It is divided into two groups: **Dioxer In-Line**, for in-line chlorine dioxide dosing, and **Dioxer Batch**, where the generation is performed in a reactor and, once complete, transferred to a storage tank for subsequent dosing.



## CLO<sub>2</sub> dosing

**Biopure®** is our comprehensive solution for disinfection, whether manual or automatic, using **chlorine dioxide** generated on site.

This line includes all the necessary components (equipment, installation accessories, chemicals and analyzers) for preparing ClO<sub>2</sub>, guaranteeing a purity level higher than **99%** and at different concentrations.

The systems that we currently provide for generating ClO<sub>2</sub> from products from the **Biopure®** range are easy to handle, operate, and control, and they guarantee proper disinfection in their different applications.

# Medication

We cover every requirement with our medication systems, whether **hydraulic** or **electric**, which are formed of pre-assembled panels to facilitate installation, dosing pumps and the Mixer: one of our leading products manufactured in-house.

## Dosatron®

At Tashia® we are committed to providing our customers with innovative solutions to meet their dosing needs. We have been official Dosatron® distributors for over 30 years, and we continue to work together to this day.

Dosatron® injectors, activated by water flow, are the easiest and most reliable way to inject medications, vaccines and supplements into water lines for consistent and even results.

They work by using a volumetric ratio principle, ensuring that your mixture remains consistent regardless of changes in flow rate and/or pressure.

## Mixer Clean

The Mixer Clean mixer is the essential accessory for your on-farm dosing system, as it has been designed to ensure perfect homogenization of the stock solution.

The key to its success lies in the combination of a number of core features that make it an efficient, high-capacity machine:

- Low-speed mixing
- Anti-foaming propeller
- 230 Vac, 110 Vac or 12 Vdc voltage
- Programmable timer
- Lower cap for quick emptying
- Continuous cleaning system.



Zaragoza, 2022

## MD Advanced Dosing Pump

Water is an essential nutrient for all living things and is the ideal means for treating, preventing or curing any illness or health problem that your farm animals may have.

Our range of high-precision proportional **electrical dosing pumps** is produced using highly chemical-resistant materials, specifically designed for administering medications, vaccines, prebiotics, acids, supplements, etc.

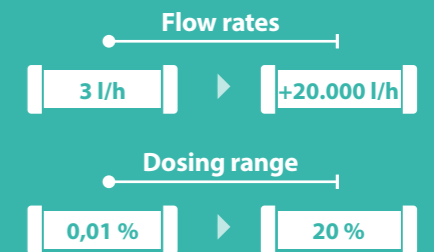


Segovia, 2023

## MD Dosing Pumps

Our R&D department is constantly developing to improve and create new equipment, such as the **MD Dosing Pumps**: part of our high-performance systems.

This equipment offers greater precision, even with no pressure in its pipe, making it a simple, efficient and safe system.



## Plus...

Our goal is very clear: to offer our customers the best and most complete service. For this reason, and by studying each day, we provide solutions for any needs that may arise at your farms.

## Chemical product

We have a chemical packaging plant for producing and supplying our most widely-used products for water treatment: biocides, flocculants, precursors, adjuvants, anti-scalants, pH reducers, algaecides, etc. We work and innovate every day to offer our customers and distributors a tailored, suitable and efficient service.

In the near future, we will expand the area inside the new packaging plant to be able to produce more innovative products that adapt to emerging needs and market developments.

This will enable us to move forward and contribute to improving water treatment systems.

## Storage tanks

We supply a wide range of tanks for storing water or other uses. We offer models for any capacity and made from different materials: polyester, polyethylene, glass fiber, etc.

## Analyzers

An important part of our complete solutions is to check that the desired result is achieved, and for this we use the most reliable systems on the market.

These easy-to-use analyzers offer quick and effective control over the level of biocides in the water with the use of digital systems or color charts.



## Fertigation equipment

Our fertigation equipment is part of the **Dosatron®** Green Line range. It is specifically designed for this requirement: to offer high-precision dosing and treatment, even when working with low flow rates and pressure.

## Cleaning systems

We know how important it is to disinfect specific areas on farms. For this reason, we offer all types of compact equipment for spraying disinfectant products onto surfaces.

## Disinfection arches

We have developed a vehicle disinfection system, based on assembly units and adaptable to the needs of any location: full arch, half arch or ground-only arch.

These are all available with customized automations, such as the push button or direction discrimination options.

The design of our arches, made with a steel structure and nozzles to keep maintenance to a minimum, can coat up to 95% of vehicle surface areas, ensuring greater disinfection of the of vehicles coming into farms.



## Turn key

Alongside developing and manufacturing equipment and complete systems, we install and maintain them, providing solutions to address all the challenges involved in dosing, disinfection, product application and spraying systems.

We develop complete, tailored systems to offer high-quality solutions, adapting to any water treatment and dosing needs.

Our *Made-to-Measure Projects* department designs efficient projects to meet our customers' expectations.

Each one requires special attention; therefore, we mass-manufacture the relevant equipment, unifying all the necessary processes to be carried out.

## Pressure sets

This is compact equipment for automatic distribution of water in installations. We have models to suit all flow rate requirements.

It offers great adjustment and control, thanks to its simple and intuitive interface, with the possibility for remote and full connection via a smartphone.

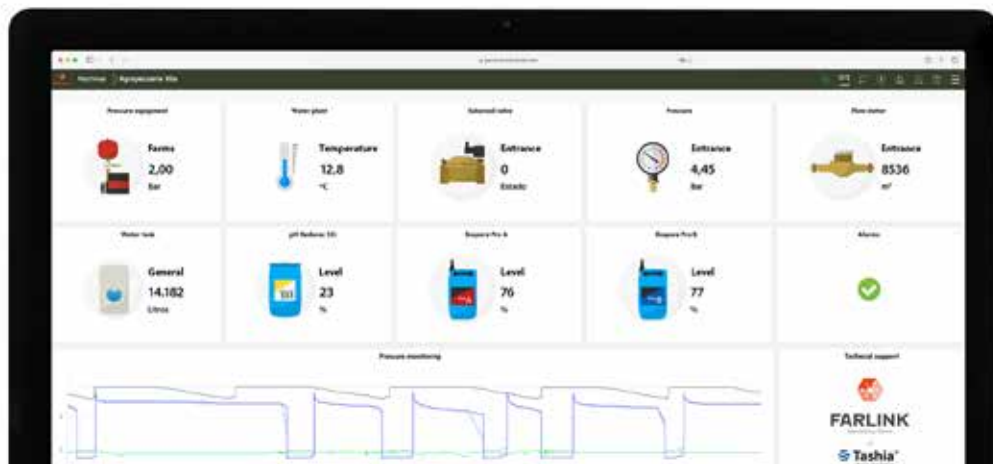




# FARLINK

Connecting Farms

**IIOT** technology adapted to farms.



**This innovative tool confers significant advantages to facility users:**

- Real-time monitoring
- Alarm management
- Detailed and customizable analysis and reports
- Different user profiles
- Enhanced biosafety



Pol. Industrial El Pla, c/Lluís Companys 5  
Artesa de Segre 25730 (Lleida) Spain

tel. (34) 973 400 840

comercial@tashia.es

[www.tashia.es](http://www.tashia.es)

## EMEA

Europe, Africa & Middle East  
emea@tashia.es

## LATAM

Latin America  
latam@tashia.es

## APAC

Asia & Pacific  
apac@tashia.es